

**JOST**



**SALES CATALOG**  
Fifth Wheel



[JOSTINTERNATIONAL.COM](http://JOSTINTERNATIONAL.COM)

Member of **JOST** World



## WHERE WE COME FROM MORE THAN 70 YEARS JOST

### 1952

Hans Breuer and Josef Steingass setup a factory for ball bearing turntables. Inspired by the semitrailer trucks they see the US troops using in Frankfurt, they start designing fifth wheel couplings made from cast steel. After filing for a patent in 1955, the first offices at the JOST factory are constructed in 1958.



### 1960

The former ball bearing turntable forge is transformed into a successful company that remains the fifth wheel market leader to this day. First production commences in South Africa.



### 1990

JOST expands into other global markets and forms.



### 2017

IPO of JOST Werke AG since July 20, 2017. A few months later, the shares are admitted to the SDAX.

### 2019

Generational change: After 20 years: Lars Brorsen hands over his function as CEO to Joachim Dürr. In 2020 the company acquires Alo Holding AB with its brand Quicke.

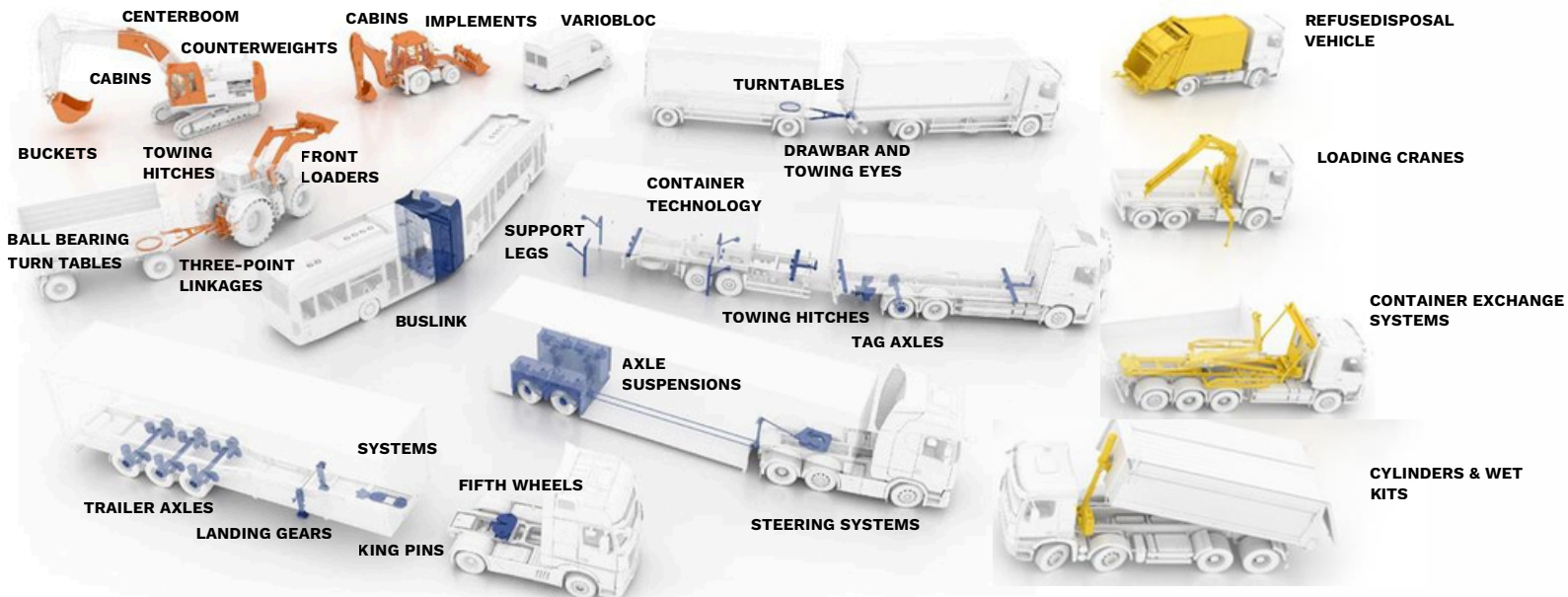
### 2023

A new production facility for the manufacture of agricultural components opens in Chennai, India. JOST also expanded its regional presence and product portfolio in the agricultural sector with two strategic acquisitions (LH Lift and Crenlo do Brasil).

### TODAY

With its JOST, ROCKINGER, TRIDEC, and Quicke brands, the company has established itself as a global market leader for the commercial vehicle industry.

## JOST PRODUCTS & BRANDS



## **FIFTH WHEEL PRODUCT LINE**



### **FIFTH WHEEL PRODUCT LINE**

JOST has been manufacturing fifth wheel coupling devices globally since 1956. **We submitted the patent for the very first steel cast fifth wheel coupling, and have continued our dedication to innovation ever since**, with new technologies and exceptional safety features that respond to the needs of our customers. **From our unique locking mechanism to new sensor fifth wheels, our fifth wheels are a standard option at every OEM.**

# PART NUMBER MASTER LIST

Fifth Wheel Product Line Code	Topplate Style	Code	Topplate Lube Type	Code	Topplate Release Type	Code	<b>JOST</b> Model Number*	Weight	Page #		
<b>JSK</b>	Fabricated Topplate	<b>36N</b>	Standard	<b>S</b>	Left Hand Release	<b>L</b>	JSK 36NSL	210 lbs.	Page 9		
	Cast Topplate	<b>37U</b>	Auto Lube	<b>A</b>	‡Air Release	<b>A</b>	JSK 37UAA	246 lbs.	Page 5		
					Left Hand Retractable	<b>B</b>	JSK 37UAB	242 lbs.	Page 5		
					Left Hand Release	<b>L</b>	JSK 37UAL	240 lbs.	Page 5		
			Auto Lube w/Steel Wear Ring	<b>D</b>	‡Air Release	<b>A</b>	JSK 37UDA	247 lbs.	Page 17		
					Left Hand Retractable	<b>B</b>	JSK 37UDB	243 lbs.	Page 17		
					Left Hand Release	<b>L</b>	JSK 37UDL	241 lbs.	Page 17		
			Standard	<b>S</b>	‡Air Release	<b>A</b>	JSK 37USA	246 lbs.	Page 5		
					Left Hand Retractable	<b>B</b>	JSK 37USB	242 lbs.	Page 5		
					Left Hand Release	<b>L</b>	JSK 37USL	240 lbs.	Page 5		
			Standard w/Steel Wear Ring	<b>B</b>	‡Air Release	<b>A</b>	JSK 37UBA	247 lbs.	Page 17		
					Left Hand Retractable	<b>B</b>	JSK 37UBB	243 lbs.	Page 17		
					Left Hand Release	<b>L</b>	JSK 37UBL	241 lbs.	Page 17		
					‡Air Release	<b>K</b>	JSK 37UBK	239 lbs.	Page 17		
					Left Hand Release	<b>E</b>	JSK 37UBE	238 lbs.	Page 14		
			With Low Lube Plates	<b>W</b>	‡Air Release	<b>A</b>	JSK 37UWA	270 lbs.	Page 7		
					Left Hand Retractable	<b>B</b>	JSK 37UWB	266 lbs.	Page 7		
					Left Hand Release	<b>L</b>	JSK 37UWL	264 lbs.	Page 7		
			With Low Lube Plates & Steel Wear Ring	<b>C</b>	‡Air Release	<b>A</b>	JSK 37UCA	271 lbs.	Page 7		
					Left Hand Retractable	<b>B</b>	JSK 37UCB	267 lbs.	Page 7		
					Left Hand Release	<b>L</b>	JSK 37UCL	265 lbs.	Page 7		
			Lightweight Steel Topplate	<b>3CN</b>	With Low Lube	<b>W</b>	Left Hand Release	<b>L</b>	JSK 3CNWL	160 lbs.	Page 11
							Left Hand Release	<b>A</b>			
					Standard	<b>S</b>	‡Air Release	<b>L</b>			
							‡Air Release	<b>A</b>			

\*Pins, bushings & collars not included when ordering topplate only.



‡ Jost International recommends that our manifold assembly kit be installed with the Air Release because it contains important safety interlock components

# **JOST**

# **RELIABLE**



\*Loc-light sensor available for this model as an option.



## **JSK37U SERIES FIFTH WHEEL**

The Industry Standard

The JOST **JSK37USL** product line begins with a cast ductile iron topplate that is becoming the fifth wheel of choice among both national fleets and owner operators. With units now in service for over a decade in the North American market, performance and reliability are well proven and accepted.

### **Capacities & Ratings**

Maximum  
Vertical Rating  
55,000 lbs

Maximum  
Horizontal Rating  
150,000 lbs



## Benefits

- Replaceable cushion ring reduces lifetime cost of ownership.
- Can be rebuilt in 30 minutes without removing the topplate.
- High couple lugs in throat help prevent high coupling.
- Ergonomically designed release handle requires only 60 lbs of pull.
- Remote grease zerk for easy servicing of the lock jaw.
- Infinite adjustment allows for fine tuning adjustments for maximum driver comfort.
- Available in low lube, auto lube and air release models.

## AVAILABLE MOUNTING STYLES

Outboard Slider



Inboard Slider



Outboard flat plate mount



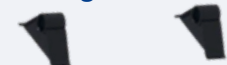
Outboard Plate Mount



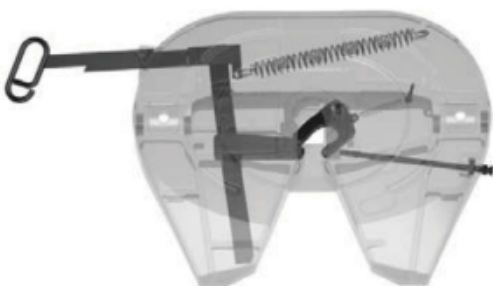
Inboard Angle Mount



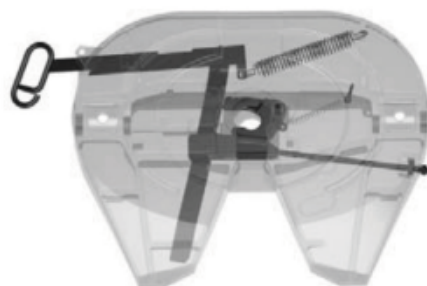
Bracket for Angle Mount



Ready to Couple



Safely Locked



## LOW-MAINTENANCE



\*Loc-light sensor available for this model as an option.

The **JSK37UW low lube** series fifth wheel eliminates the need to constantly grease the topplate surface. The wear resistant pads need only a thin layer of grease for the break in. The JOST wheel also features an external grease fitting for lubricating the lock jaw. These two elements combined eliminate the need to uncouple to lubricate the lock jaw; saving time and money.

### Capacities & Ratings

Maximum  
Vertical Rating  
55,000 lbs

Maximum  
Horizontal Rating  
150,000 lbs



## Design Features

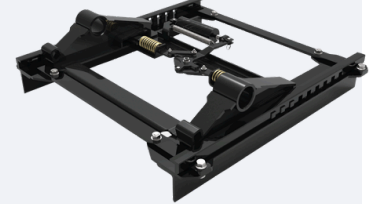
- Easy to maintain.
- Liners are replaceable from the top of the wheel.
- Bonded steel backing plate increases durability.
- Available on JSK37U style fifth wheels.

### AVAILABLE MOUNTING STYLES

Outboard Slider



Inboard Slider



Outboard flat plate mount



Outboard Plate Mount



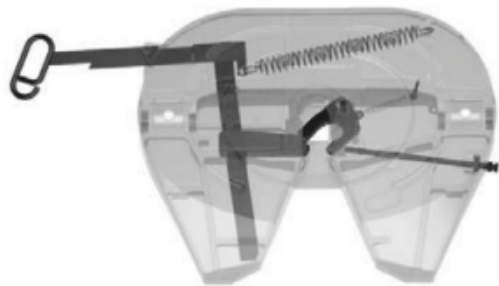
Inboard Angle Mount



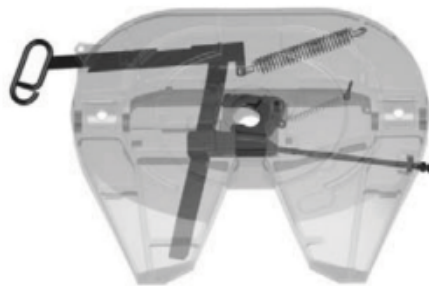
Bracket for Angle Mount



Ready to Couple



Safely Locked



# **JOST**

# **LIGHTWEIGHT**



## **JSK36NSL SERIES**

Lightweight Fifth Wheel

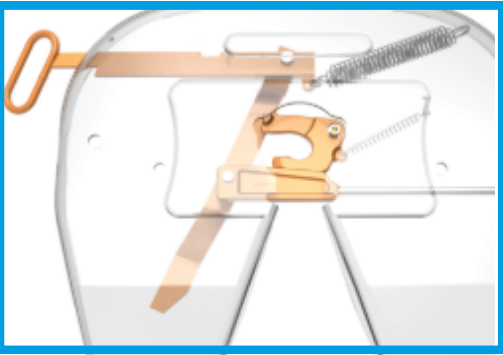
This economical OEM entry-level fifth wheel is perfect for owners with a short trade cycle.

The **JSK36NSL** lightweight topplate offers weight savings without sacrificing the safety and proven reliability JOST is known for. **Safety First:** All JOST fifth wheels have the same proven locking mechanism. Unlike competitive lightweight fifth wheels that can be complex with new, unproven locking mechanisms.

### **Capacities & Ratings**

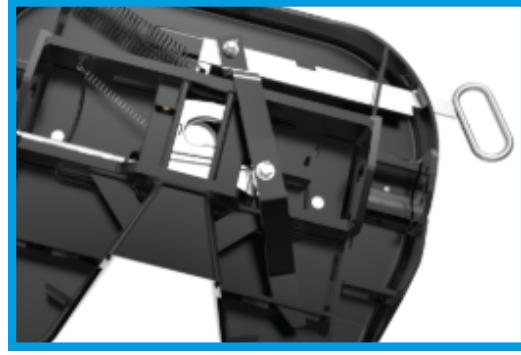
Maximum  
Vertical Rating  
50,000 lbs

Maximum  
Horizontal Rating  
150,000 lbs



**JOST Locking Mechanism**

Like all JOST fifth wheels, the JSK36N employs our safe and simple locking mechanism with just four moving parts.



**Consistent Operation**

Drivers and technicians are already familiar with the operation and maintenance of the JOST locking mechanism.

**Benefits**

- Weighs 210 lbs, a 30 pound reduction which allows for an increase in payload, improved fuel efficiency and a reduction in greenhouse gas.
- Can be rebuilt in 30 minutes without removing the topplate.
- Drivers and technicians are familiar with the principle and operation and maintenance of the JOST locking mechanism.
- An ideal choice when replacing competitive assemblies

**AVAILABLE MOUNTING STYLES**

Outboard Slider



Inboard Slider



Outboard flat plate mount



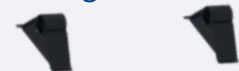
Outboard Plate Mount



Inboard Angle Mount



Bracket for Angle Mount



**Ready to Couple**



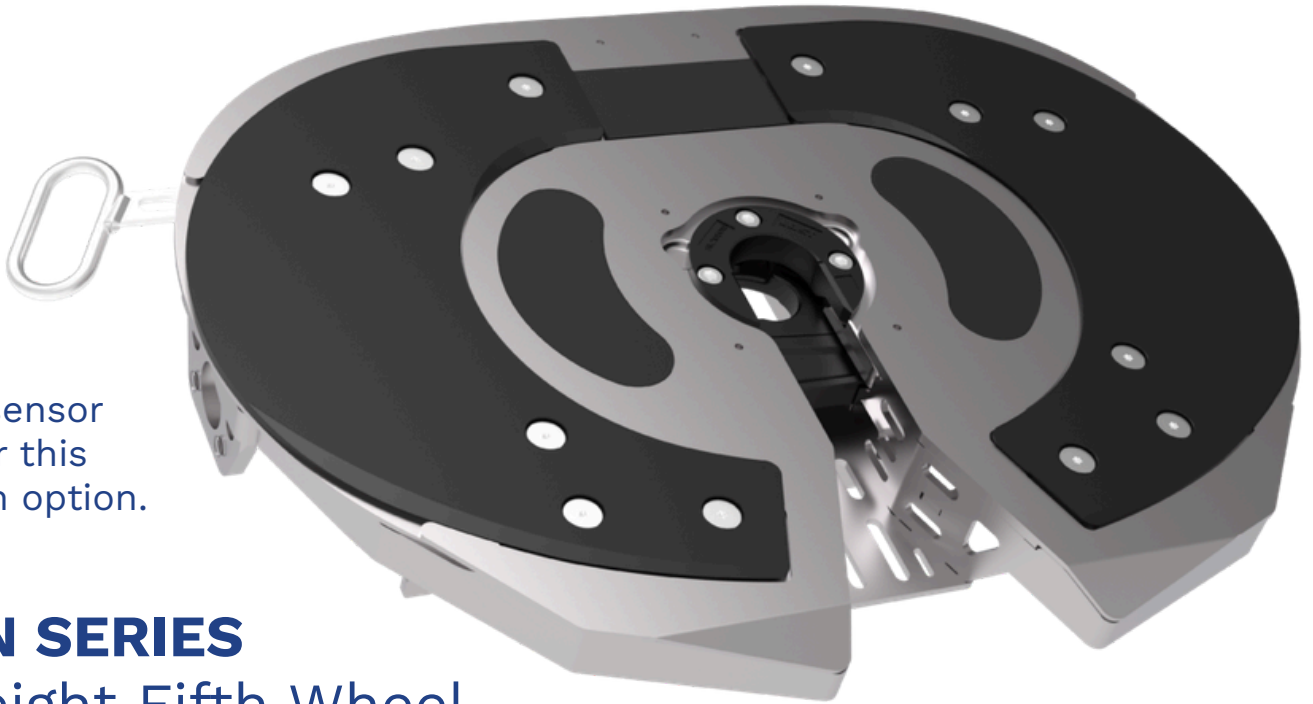
**Safely Locked**



# EFFICIENT



\*Loc-light sensor available for this model as an option.



## **JSK3CN SERIES** Lightweight Fifth Wheel

The **JSK3CNWL** is JOST's lightweight option for highway applications-- without the expensive cost of aluminum. This model features a fusion welded steel top plate that incorporates a carbon fiber beam.

### **Capacities & Ratings**

Maximum  
Vertical Rating  
55,000 lbs

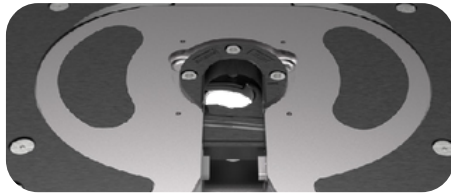
Maximum  
Horizontal Rating  
150,000 lbs



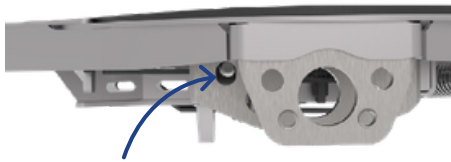
## AVAILABLE MOUNTING STYLES



**Low Lube Liners**  
Composite pads are bolted down to the top plate for quick and easy replacement when worn.



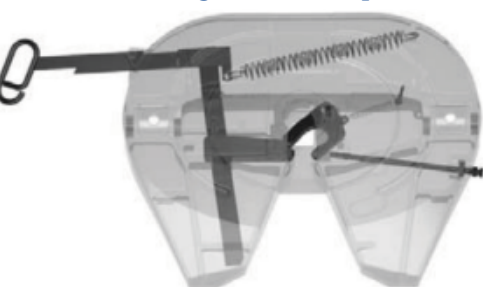
**Steel Wear Ring**  
Built to last in tough conditions, keeping your JOST fifth wheel on the road longer.



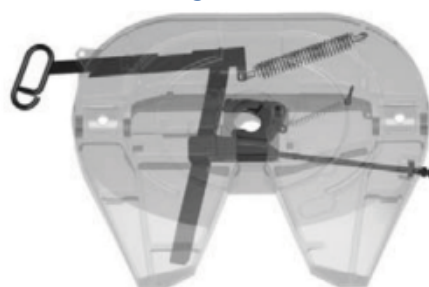
**Infinite Internal Adjustment**  
Shortened internal adjustment for weight and space savings.

\*Disclaimer: all top plates come in standard black powdercoat\*

### Ready to Couple



### Safely Locked



Outboard Slider



Inboard Slider



Outboard flat plate mount



Outboard Plate Mount

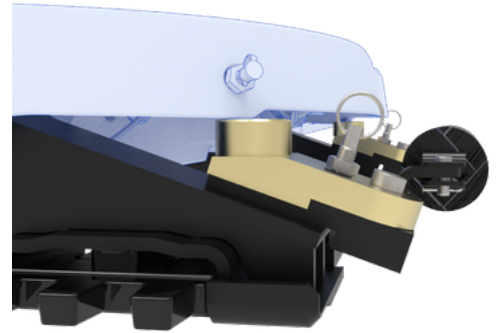
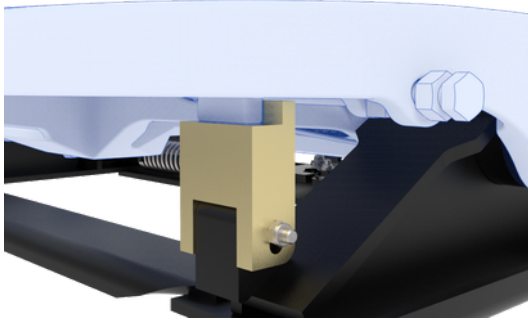


Inboard Angle Mount



Bracket for Angle Mount

## NO-TILT CONVERTER BRACKETS



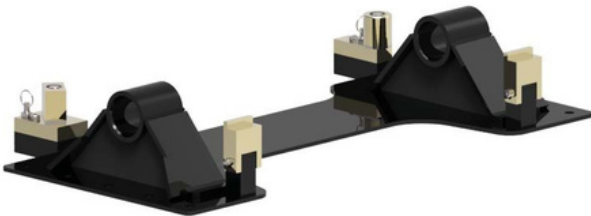
### Outboard Sliding Mount



### Inboard Sliding Mount



### Outboard Stationary Mount



\*We have bracket exchange options available to upgrade to this model

### Keeping it Simple

The no-tilt convertible fifth wheel is designed for use with both framed and frameless dump trailer applications.

When the pivot stops are engaged the topplate is rigid and does not articulate. This configuration is used for frameless dump trailers where the articulation is provided in the trailer upper coupler.

When the pivot stops are disengaged the topplate is free to articulate. This configuration is used for framed or conventional trailers that require articulation.

### Technical Specifications

- No tools required for conversion.
- Ideal for fleets that utilize both framed and frameless dump trailers.
- All parts necessary to convert from no-tilt to tilt are contained on the fifth wheel. No need to store additional parts.
- Simple mechanism allows fast conversion.
- Available in 8" and 9" heights on both stationary and outboard sliding models, 9" only on inboard sliding model.

# **JOST**

---

# **SECURITY**



**JSK37UBE**  
**Loc-Light Sensor Wheel**

## **Security & Illumination**

The Loc-Light system enhances your JOST fifth wheel with the addition of our two-sensor monitoring system.

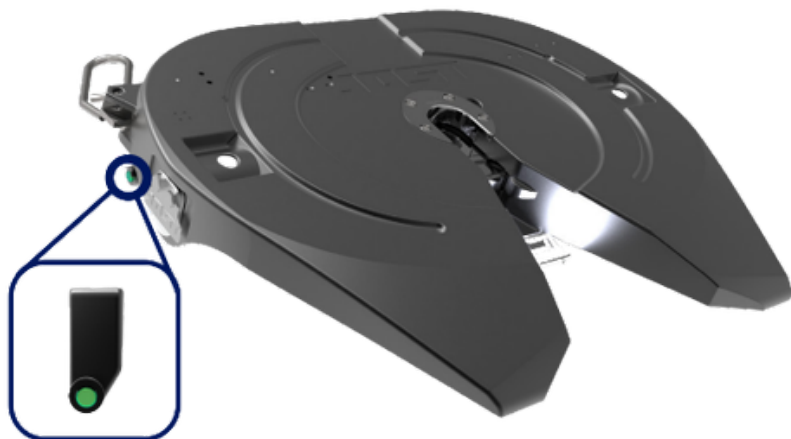
### **Capacities & Ratings**

Maximum  
Vertical Rating  
55,000 lbs

Maximum  
Horizontal Rating  
150,000 lbs



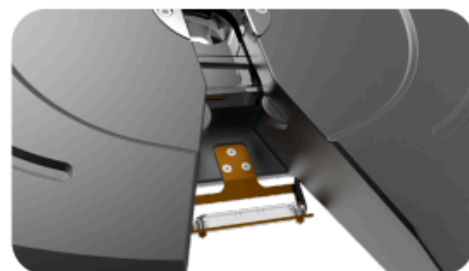
Scan to see  
the Loc-Light  
In Action



**The dual-sensor system** is connected to the Go/No-Go indicator light located next to the handle. A proper coupling with the handle and kingpin in the locked position will be lit up as green or “Go light”. If the system does not detect the handle and/or kingpin in the proper locked position, the light will flash red or “No-Go light”

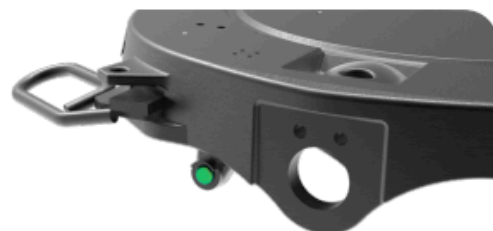
**The throat illumination light** option automatically turns on when the system is engaged. The light shines directly into the throat of the wheel to provide a better view of the lockbar for pre-trip inspections. *\*Sold separately\**

Available on:  
Air Release Topplates  
Converter Dolly Topplates  
Illumination light kit: Part number SK79024-26



#### Throat Illumination

LED Light shines into the throat for clear inspection of the coupled fifth wheel. *\*Sold separately\**



#### Go Light

Green light indicates the fifth wheel is properly coupled, with both kingpin and handle in the locked position.



#### No-Go Light

Flashing red light with audible alert indicates that the kingpin and/or handle are not properly coupled.

# **JOST**

## **UPGRADES**

### **STEEL WEAR RING**



The steel wear ring is designed for environments that are hard on the throat of the fifth wheel. Made with alloy steel hardened to 262 - 321 BHN. This will provide lasting performance, keeping your fifth wheel on the road longer.

### **SENSOR COUPLING DASHBOARD DISPLAY**



The display clearly indicates the condition of the wheel and the trailer. When properly coupled, the dashboard display shows the locked icon in green, when ready to couple it shows the uncoupled icon in red. Please refer to the owners manual for the full range of displays and reasons for each of them

## STEEL WEAR RING



To order as a separate piece: SK79002-01



### Built for Tough Environments

The steel wear ring is designed for environments that are hard on the throat of the fifth wheel. Made with alloy steel hardened to 262 - 321 BHN. This will provide lasting performance, keeping your fifth wheel on the road longer.

### Convenience

The steel wear ring is replaceable and can be quickly changed when it gets worn. It can also be used in place of the standard cushion ring on your JOST fifth wheel.

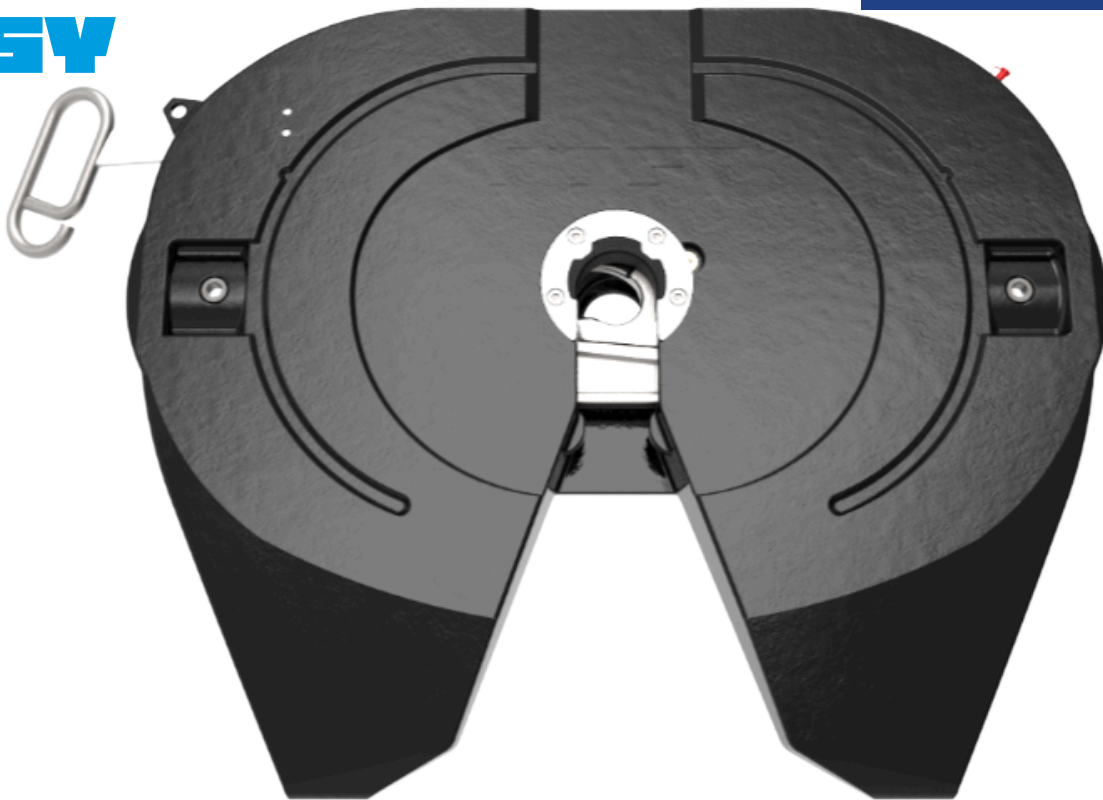
To order your topplate with a steel wear ring insert, please refer to the chart below:

Standard Wheel	Crossover for Steel Wear Ring
JSK37USL	JSK37UBL
JSK37USB	JSK37UBB
JSK37USA	JSK37UBA
JSK37HSL	JSK37HBL
JSK37FSL	JSK37FBL

*\*For all other wheel crossovers, please contact JOST\**

**MAKING CHANGE**

**EASY**



**JOST International offers topplates that replace competitive models.**

**Making The Change**

A couple hours is a long time for a rebuild, a JOST replacement wheel will save you time and money.

Instead of rebuilding your old worn out wheel, replace it with a brand new JOST.

**Warranty**

Don't worry about the warranty, receive a new five year warranty with the JOST 5th wheel.

JOST will also warrant any unused coverage remaining on your current bracket.

**JSK37HSL**

**Replacement "H" Models**

FW8 FW2000 FW3501  
FW17 FW2500 FWAL  
FW35 FW2535

**Replaces Kits**

RK-17-A-L  
RK-351-A-L  
RK-AL-A-L

JSK37HJST will increase 5th wheel height by 3/4".

**JSK37FSL**

**Replacement "F" Models\***

SL5000 SL7000  
SL6000  
SL5092  
SLH5092

**Replaces Kits**

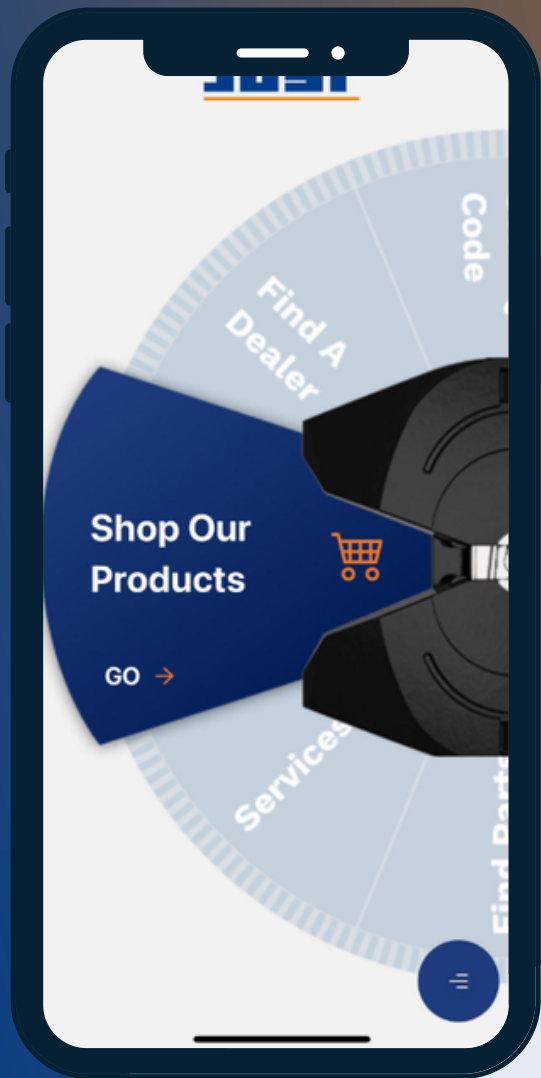
KIT-RPR-5092L  
KIT-RPR-7000

JSK37FJST will increase 5th wheel height by 5/16".  
\*Is not compatible with the 7" LWS Series Sliders.



# ALL THINGS JOST IN THE PALM OF YOUR HANDS

We're excited to introduce the new JOST App, designed to make it easier than ever to access the information and tools you need – anytime, anywhere.



## PARTS FINDER AND DEALER LOCATOR

Find dealers and distributors with our locator tool



## QR CODE SCANNER

Use the built-in QR scanner to instantly pull up product information, manuals, and resources right from the field



## TRACK YOUR ORDERS

Track your JOST orders in real time, so you always know the status of your shipment



## EDUCATION AND LITERATURE

Download JOST product literature and manuals straight to your mobile device, so the information is always at your fingertips online or offline.



## PRODUCTS

Explore the full JOST product lineup and access detailed information right from the app."

