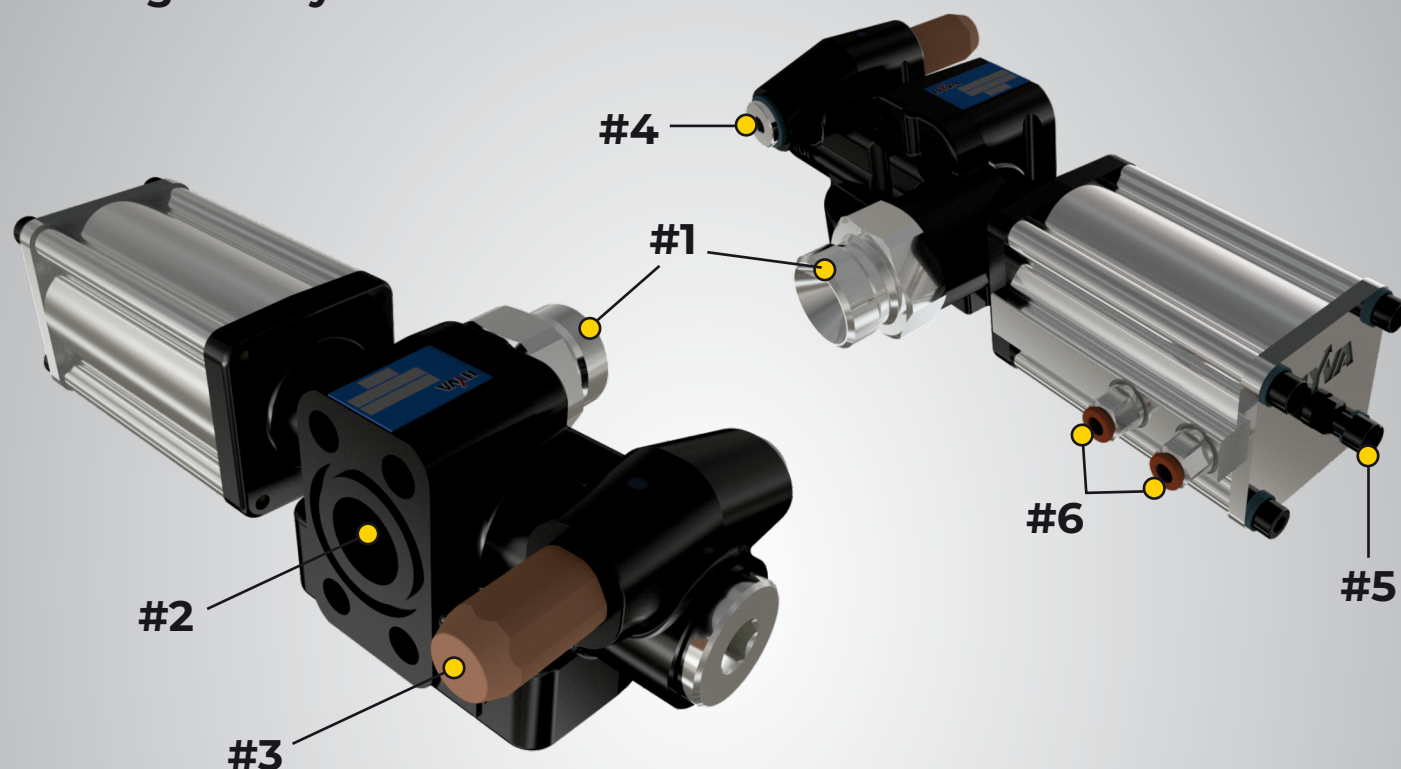


- Cast hydraulic housing / Aluminum pneumatic housing
- More compact & lighter weight.
- Weighs only 8.16 lbs



POS.	FEATURES	BENEFITS
#1	Integrated non-return valve	- No oil flow/pressure spikes back to pump - SAFETY - No fallen body when hose burst
#2	SAE connection option	Multiple beneficial installation options
#3	Pre-set relief pressure cartridge	Easily accessible & easy to change cartridges available from 1958 psi to 5075 psi
#4	Extra G $\frac{1}{4}$ " port	Spot for pressure indicator / pressure gauge
#5	Adjustable speed screw	Raise or lower the lowering speed
#6	Standard $\frac{1}{4}$ " air lines	

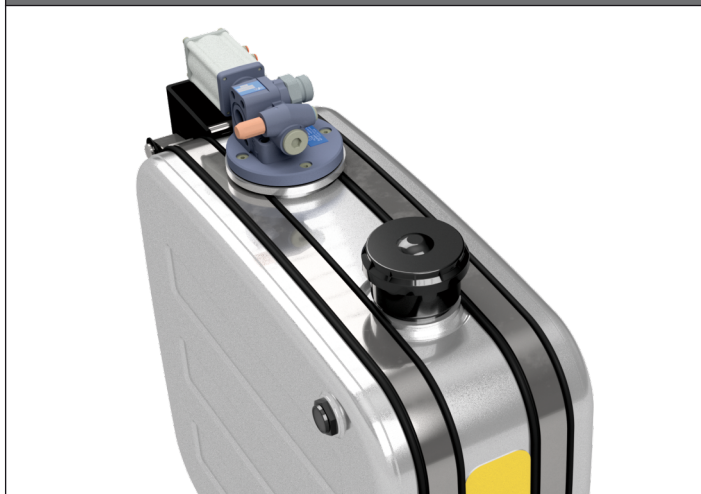
HT 1150 TIPPING VALVE

MOUNTING THE VALVE

VALVE CAN NOW BE MOUNTED DIRECTLY TO THE CYLINDER



VALVE CAN ALSO BE MOUNTED TO FLAT RETURN FILTER ON OIL TANK



CAN ALSO BE REMOTE MOUNTED ANYWHERE ON THE CHASSIS



BENEFITS

Mounted directly to the cylinder =

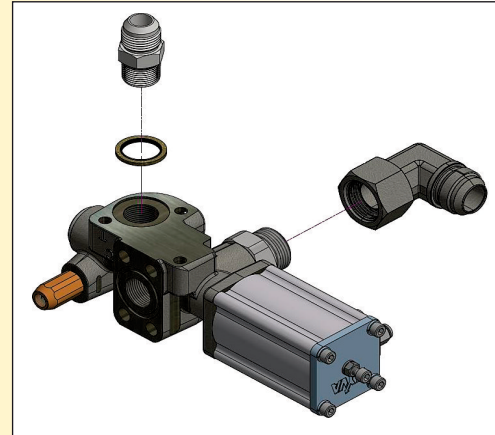
- No need for high pressure hose to cylinder
- No NPT fittings needed into cylinder
- Simple, fast installation

Check Valve on pump port:

- Works as a built in Hose Burst Valve!

Ask about our K01 'KIT':

- Comes with fittings to go to 1" JIC



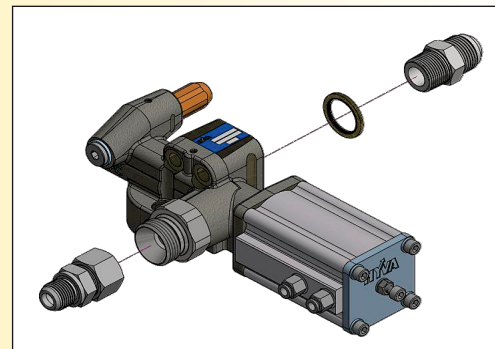
BENEFITS

Mounted directly to the tank =

- Oil returns directly into high capacity return filter
- No need for return hose
- Simple, fast installation

Ask about our K02 'KIT':

- Comes with fittings to go to 1" JIC

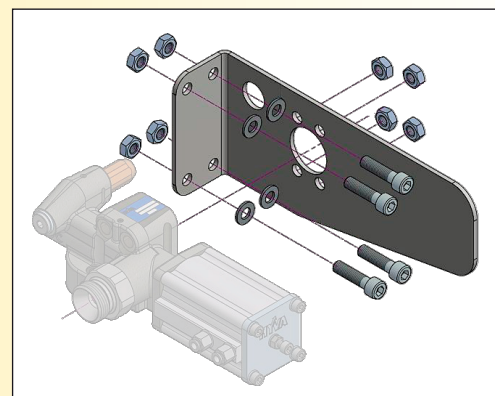


BENEFITS

- Can be remote mounted anywhere!
- Installation flexibility

Ask about our K04 'KIT':

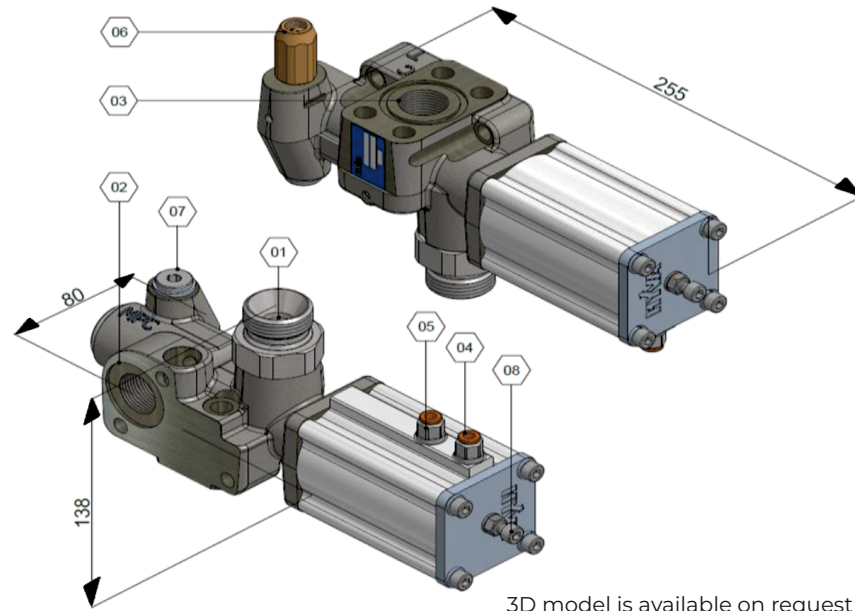
- Comes with all fittings to go to 1" JIC & chassis mounting bracket



HT-1150-TNK / SAE-1/4

For direct mounting on:

- TNK: Hyva tank mounting plate
- SAE: SAE inlet of Hyva cylinder



3D model is available on request

- 1 P Pump connection
- 2 T Tank connection
- 3 C Cylinder connection SAE
- 4 Pneumatic connection (Tip) 1/4"
- 5 Pneumatic connection (Lower) 1/4"
- 6 Pressure relief cartridge
- 7 MPC Measure Pressure Cylinder (Pressure gauge point)
- 8 Adjustment screw (int. hex. 5) (To adjust the lowering speed)

Hydraulic connections

P	G1"
T	G3/4"
C	G3/4" / SAE
MPC	G1/4"

SAFETY:

HT valve fitted on cylinder (SAE) port provides hose burst safety function

Part no.	Description	Max. pressure	
		psi	bar
14767814	TIP VALVE HT-TNK/SAE-1150-135-P1"-1/4"	1958	135
14767816	TIP VALVE HT-TNK/SAE-1150-150-P1"-1/4"	2176	150
14767818	TIP VALVE HT-TNK/SAE-1150-170-P1"-1/4"	2466	170
14767820	TIP VALVE HT-TNK/SAE-1150-190-P1"-1/4"	2756	190
14767822	TIP VALVE HT-TNK/SAE-1150-220-P1"-1/4"	3191	220
14767824	TIP VALVE HT-TNK/SAE-1150-250-P1"-1/4"	3626	250

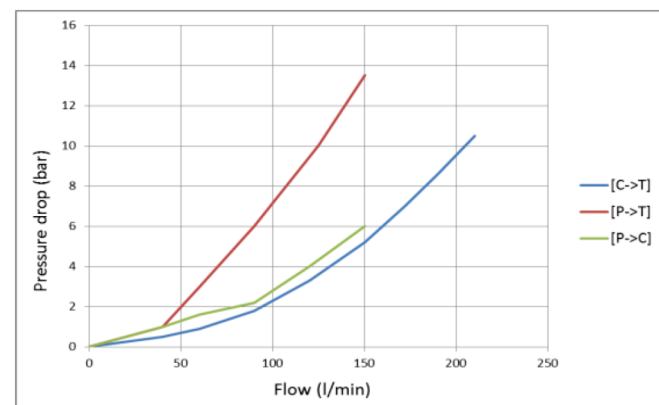
Mounting kit	Kit no.
Cylinder (SAE)**	14735162
Tank (TNK)**	14735168

** included with valve

Specifications

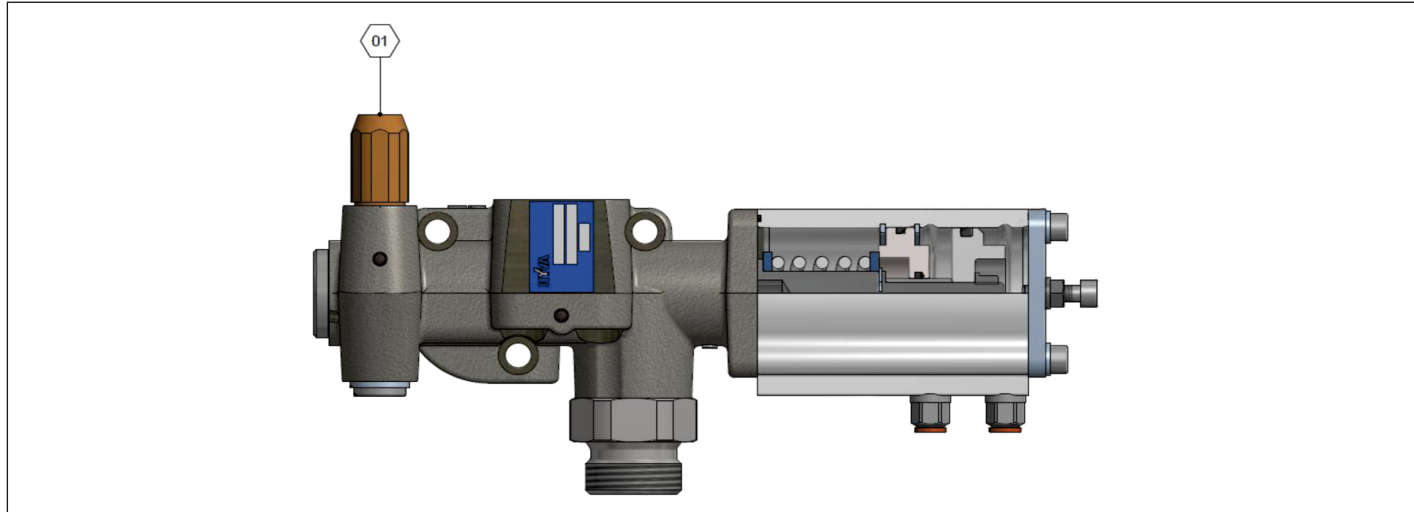
Type	3/3 pneumatic operated tipping valve with proportional lowering	
Max. pump flow	40	gal/min
Max. pressure	4569	psi
Pneumatic pilot pressure	87 - 174	psi
Max. pressure on T-connection	145	psi
Min. Filtration	984	µinch
Viscosity range min / max	0,0186 / 0,155	in ² /s
Max. starting viscosity	2,325	in ² /s
Temperature range min / max	136 / 176	°F
Mass	8,16	lbs

Δp - Q Characteristic



Technical notes

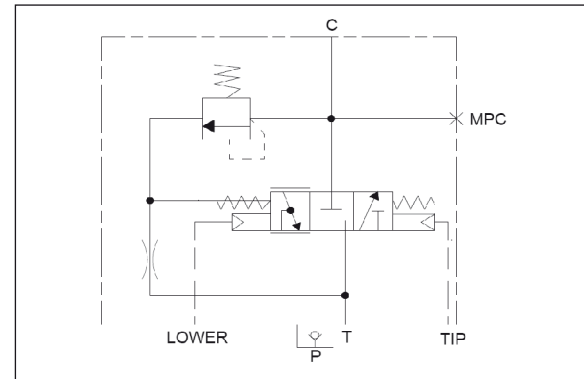
· Mount the valve according the mounting instructions · Use the correct washers and adapters in the ports to prevent deformation of the housing. Do not use adapters with tapered threads · To further prevent deformation of the valve housing, the mounting plate surface or block must be completely flat and smooth · Do not weld to the valve · Ideal air pressure for valve is 116 psi · Make sure inlet air is dry and clean · Painted black (RAL9005)



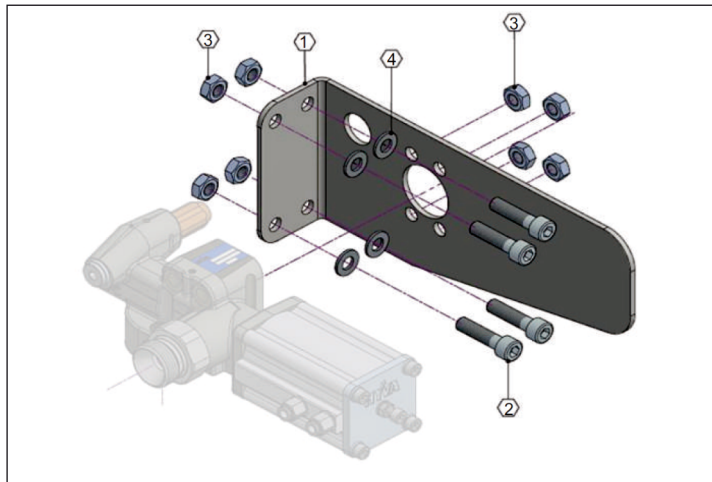
Relief Cartridges

Position	Part no.	Description	Qty.
1	14772__	Pressure relief cartridge	1
	135	1958 psi	
	150	2176 psi	
	170	2466 psi	
	190	2756 psi	
	220	3191 psi	
	250	3626 psi	

Hydraulic symbol HT valve



VALVE ACCESSORIES



SAE chassis bracket kit for HT 1150 valve

Pos.	Kit no.	Description	Qty.
	65001210-C1	SAE chassis bracket kit for HT 1150 valve consisting of:	
1		SAE chassis bracket for HT 1150 valve	1
2		Screw M10	4
3		Hex nut M10	8
4		Washer M10	4

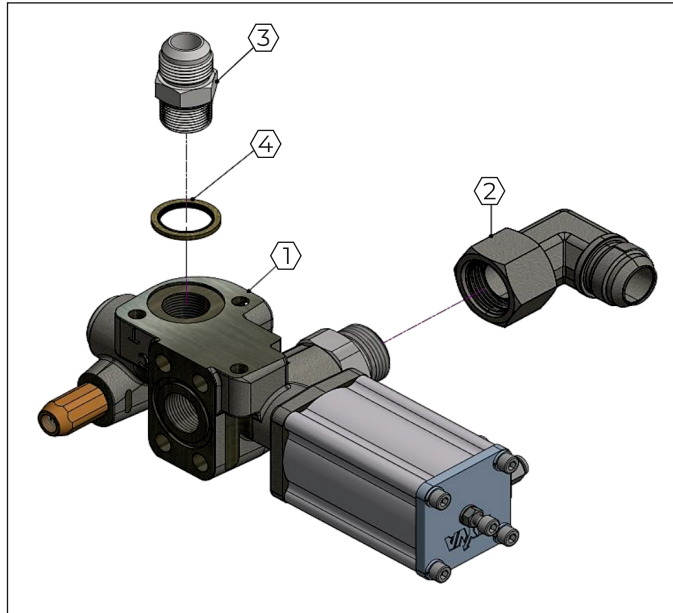
Hydraulic pressure indicator

Part no.	Description
14880790-K1	Pressure switch kit - body up indicator consisting of:
14880790DS	Pressure switch for control light 300 bar 1/4" BSPOT
14880791	Protective cap with dual cable entries

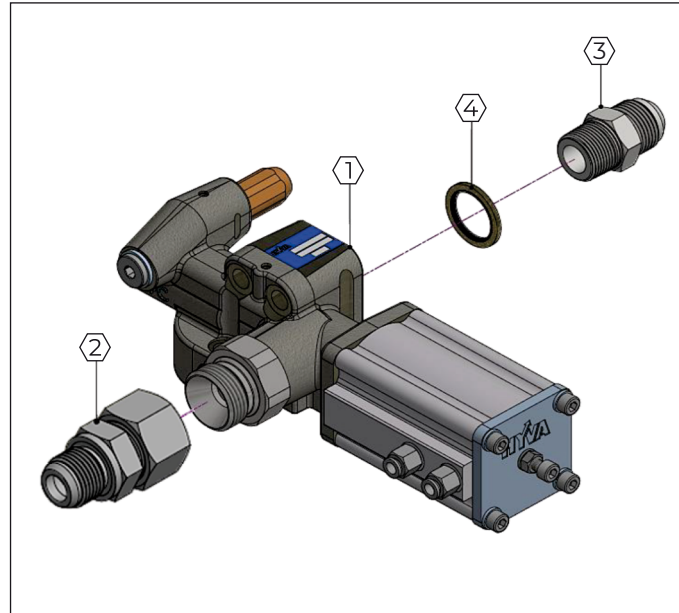


HT 1150 VALVE KITS

K01 - CYLINDER MOUNTING



K02 - TANK MOUNTING



K01 - kits

Kit no.	Description	Qty.
14767816K01	Tip valve HT-TNK/SAE-1150-150-KIT	1
14767818K01	Tip valve HT-TNK/SAE-1150-170-KIT	1
14767820K01	Tip valve HT-TNK/SAE-1150-190-KIT	1
14767822K01	Tip valve HT-TNK/SAE-1150-220-KIT	1
14767824K01	Tip valve HT-TNK/SAE-1150-250-KIT	1

K02 - kits

Kit no.	Description	Qty.
14767816K02	Tip valve HT-TNK/SAE-1150-150-KIT	1
14767818K02	Tip valve HT-TNK/SAE-1150-170-KIT	1
14767820K02	Tip valve HT-TNK/SAE-1150-190-KIT	1
14767822K02	Tip valve HT-TNK/SAE-1150-220-KIT	1
14767824K02	Tip valve HT-TNK/SAE-1150-250-KIT	1

K01 - components

Pos.	Part no.	Description	Qty.
1	147678XX*	Tip valve HT TNK/SAE-1150*	1
2	65001113	Adaptor-HP-90-1"BSPITSW-16 JIC (1")***	1
3	65001111	Adaptor-HP-00-3/4"BSPITSW-16 JIC (1")***	1
4	01206850	Bonded seal 3/4"	1

K02 - components

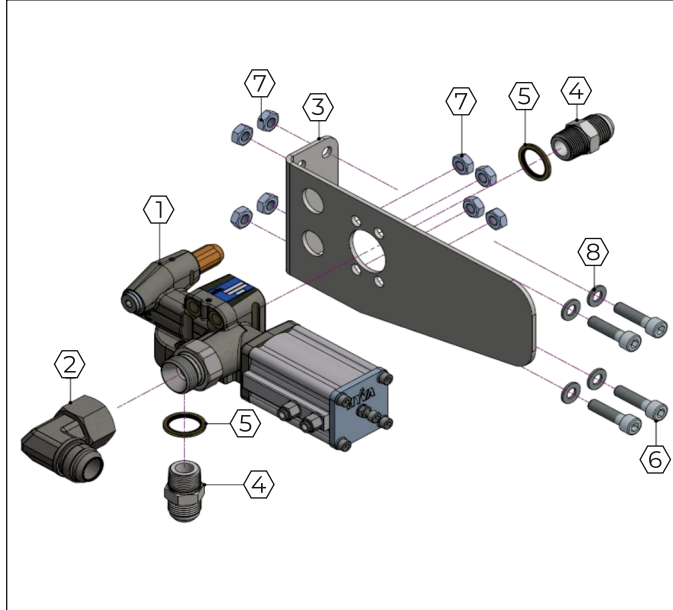
Pos.	Part no.	Description	Qty.
1	147678XX*	Tip valve HT TNK/SAE-1150*	1
2	65001245	Adaptor-HP-00-1"BSPITSW-16 JIC (1")***	1
3	65001111	Adaptor-HP-00-3/4"BSPITSW-16 JIC (1")***	1
4	01206850	Bonded seal 3/4"	1

* Kit 14767816K01 includes valve 14767816, kit 14767818K01 includes valve 14767818, etc.

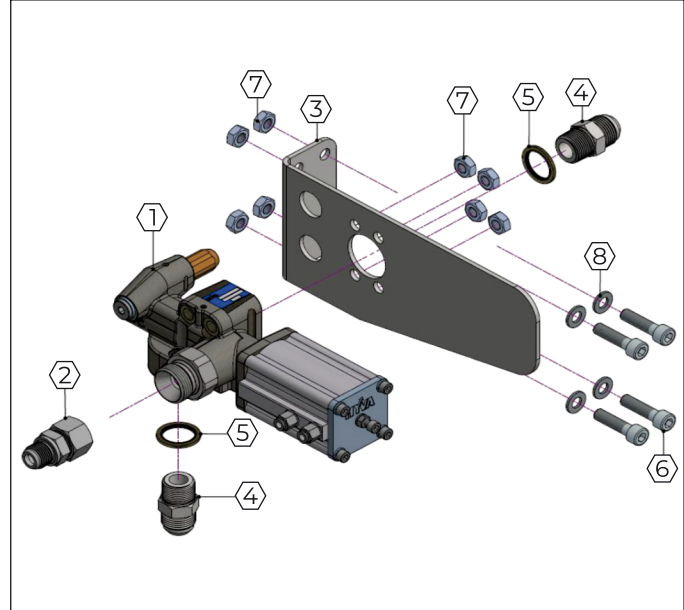
** Mounting kits 14735162 (for cylinder mounting) & 14735168 (for tank mounting) are included with the valve. Mounting kits contain bolts, washers and O-ring.

*** Thread size of JIC part is 1 5/16" - 12 UN

K03 - CHASSIS MOUNTING



K04 - CHASSIS MOUNTING



K03 - kits

Kit no.	Description	Qty.
14767816K03	Tip valve HT-1150-150-KIT chassis mount	1
14767818K03	Tip valve HT-1150-170-KIT chassis mount	1
14767820K03	Tip valve HT-1150-190-KIT chassis mount	1
14767822K03	Tip valve HT-1150-220-KIT chassis mount	1
14767824K03	Tip valve HT-1150-250-KIT chassis mount	1

K04 - kits

Kit no.	Description	Qty.
14767816K04	Tip valve HT-1150-150-KIT chassis mount	1
14767818K04	Tip valve HT-1150-170-KIT chassis mount	1
14767820K04	Tip valve HT-1150-190-KIT chassis mount	1
14767822K04	Tip valve HT-1150-220-KIT chassis mount	1
14767824K04	Tip valve HT-1150-250-KIT chassis mount	1

K03 - components

Pos.	Part no.	Description	Qty.
1	147678XX*	Tip valve HT TNK/SAE-1150*	1
2	65001113	Adaptor-HP-90-1"BSPITSW-16 JIC (1")***	1
3	65001210	Bracket for chassis mounting	1
4	65001111	Adaptor-HP-00-3/4"BSPITSW-16 JIC (1")***	2
5	01206850	Bonded seal 3/4"	2
6		Screw M10x1.5x30 12.9 DIN912	4
7		Hex nut M10x1.5 8.8 DP DIN934	8
8		Washer flat M10 ZP DIN125	4

K04 - components

Pos.	Part no.	Description	Qty.
1	147678XX*	Tip valve HT TNK/SAE-1150*	1
2	65001245	Adaptor-HP-00-1"BSPITSW-16 JIC (1")***	1
3	65001210	Bracket for chassis mounting	1
4	65001111	Adaptor-HP-00-3/4"BSPITSW-16 JIC (1")***	2
5	01206850	Bonded seal 3/4"	2
6		Screw M10x1.5x30 12.9 DIN912	4
7		Hex nut M10x1.5 8.8 DP DIN934	8
8		Washer flat M10 ZP DIN125	4

* Kit 14767816K03 includes valve 14767816, kit 14767818K03 includes valve 14767818, etc.

** Mounting kits 14735162 (for cylinder mounting) & 14735168 (for tank mounting) are included with the valve. Mounting kits contain bolts, washers and O-ring.

*** Thread size of JIC part is 1 5/16" - 12 UN



Tipping Solutions | Container Handling | Waste Handling | Cranes

110 countries
+3,500 employees
20,000 customers
+30 subsidiaries
12 production facilities



Hyva is a leading provider of innovative and highly efficient transport solutions for commercial vehicles used in transport, construction, mining, materials handling and environmental service industries.

Founded in 1979 in the Netherlands, the company has a global presence with more than 30 wholly owned subsidiaries, extraordinary service coverage and 12 manufacturing facilities in Brazil, China, Europe and India.

For more information on Hyva, please visit www.hyva.com

or follow us on:



Hyva Corporation
864 Lively Blvd,
Wood Dale, Illinois 60191, USA
Phone: +1-630-227-9020
Fax: +1-630-227-9029
salesusa@hyva.com
www.hyva.com



Quality and environmental certified



Disclaimer: Products shown in this brochure might be partially equipped and may not correspond to the standard version. Country-specific regulations must be observed. Dimensions may vary. This brochure could be subjected to technical changes, errors and translation mistakes.