

Normal Operation:

The sensor system is a binary open or closed circuit signal.

The Kingpin Sensor detects proximity of ferrous (iron/steel) metal.

The Handle Sensor detects the presence of a magnet.

1. When both sensors detect nothing (open circuit), the topplate is ready to couple.
2. When both sensors detect something (closed circuit), the topplate is coupled.
3. When the sensors disagree (1 open & 1 closed circuit), the system provides audible & visual warnings.

If the red light is flashing when uncoupled & no kingpin present

The Kingpin Sensor detects metal with no kingpin present.

1. Clean the Kingpin Sensor tip (kingpin side) and remove any contaminated grease (see figure 1).
2. With ignition key on, the sensor should be glowing where the wire enters (see figure 2).
3. Check to see if the Kingpin Sensor will detect steel (see figure 1).
4. The cleaned sensor tip should be sticking out a bit from the casting (see figure 1).
5. Loosen the screw securing the Kingpin Sensor and remove the sensor (see figure 2).
Inspect for damaged to the kingpin sensor tip or casing. When reinstalling the screw do not overtighten the screw against the sensor, tighten to 19 in-lb.

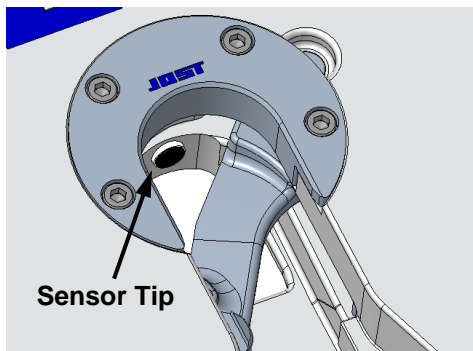


Figure 1

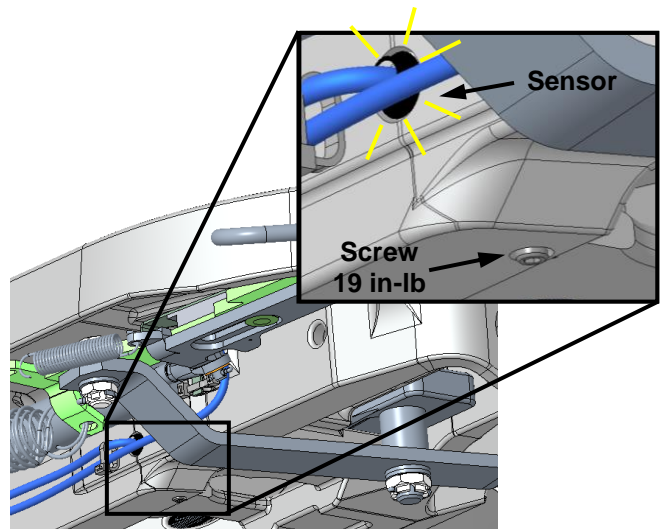


Figure 2

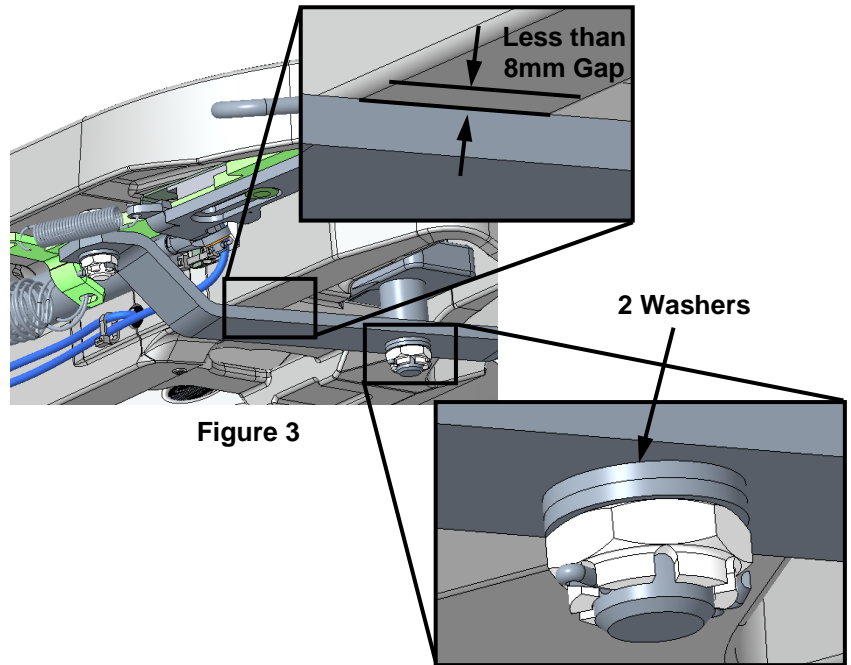
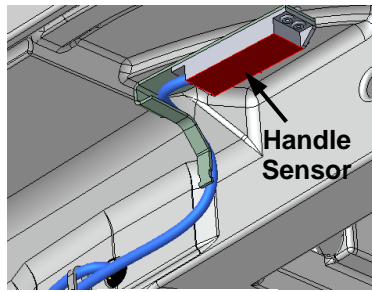
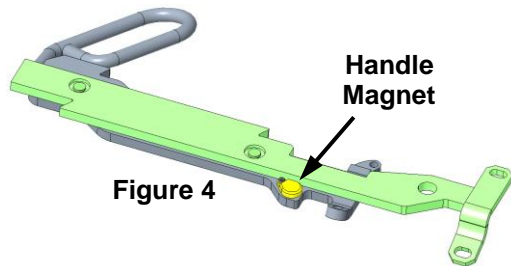
Note:

Plastic cap may be covering the sensor tip. Cap may be removed and discarded. It is for shipping only and is not required if missing or damaged.

If the red light is flashing (continued) when coupled to kingpin

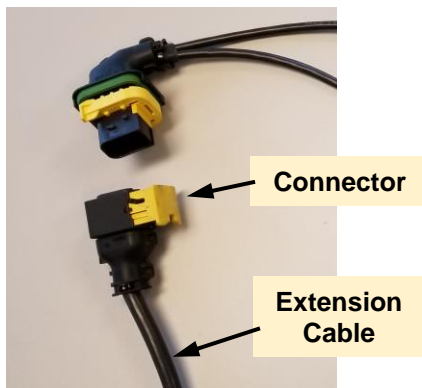
The Handle Sensor does not detect the Release Handle Magnet.

1. Is the Lever (SK3105-140) bent?
There must be less than 8mm gap between the lever & casting (see figure 3).
2. There must be 2 Washers between the Lever and the aft Castellated Nut securing the Lever to the Locking Bar (see figure 3).
3. The magnet must be present on the Release Handle (see figure 4).
4. Does the Sensor detect a Magnet? Place an Extendable Magnet against the handle sensor (see figure 5).



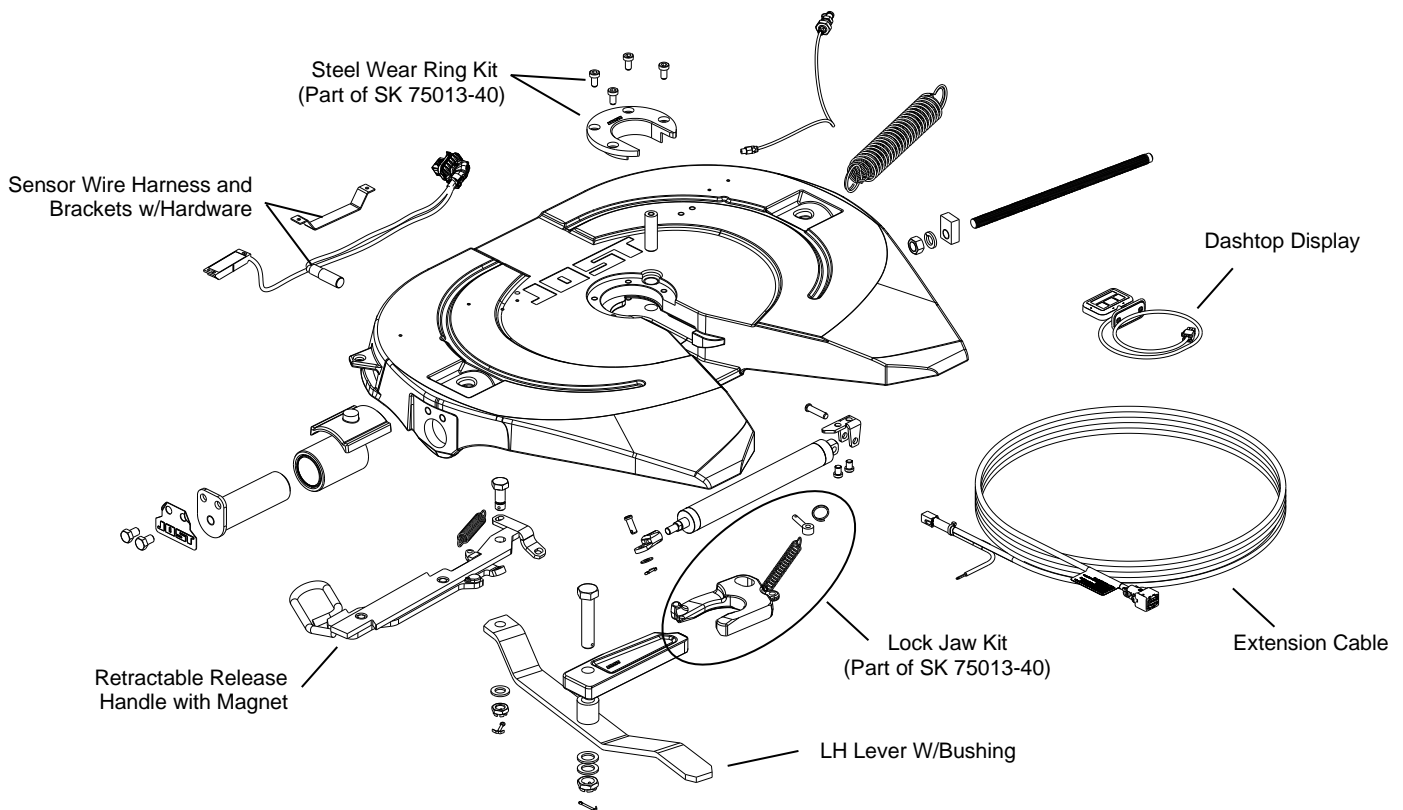
Additional inspections:

1. Inspect the Extension Cable Connector for bent or misaligned pins (see figure 6).
2. Inspect the Dash Display for pulled wires (see figure 7).
If you see colored wires, some wires may have been pulled out of the circuit board.
3. Inspect the Dash Display connector for bent or damaged pins.



Commonly Stocked Dealer Repair Parts

JOST Part#	Part Description	Fit JOST Models
SK 79040-23	Retractable Release Handle with Magnet	JSK37UBK
		JSK37UBE
SK 3105-140	LH Lever W/Bushing	JSK37U Series
SK 75013-20K	Lever and Release Handle Kit	JSK37UBK
		JSK37UBE
SK 79013-41	Steel Wear Ring Kit* (*Included in SK 75013-40)	JSK37U Series
SK 72953-01	Lock Jaw Kit* (*Included in SK 75013-40)	JSK37U Series
SK 75013-40	Steel Wear Ring and Lock Jaw Kit	JSK37U Series
SK 75016-15	Sensor Wire Harness and Brackets w/Hardware	JSK37UBK
SKE501620394	Dashtop Display	JSK37UBK
SKE002110394	Extension Cable	JSK37UBK



The right to alter specifications is reserved.

Page 3 of 3



1770 Hayes Street
Grand Haven, MI 49417
www.jostinternational.com

Ph. (616) 846-7700 (800) 253-5105
Fax (616) 846-0310

LT SK37K-03 RevD