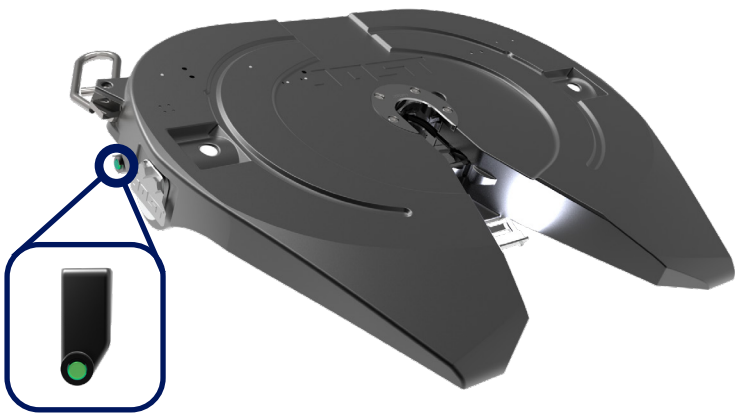


LOC-LIGHT SENSOR



Security & Illumination

The **Loc-Light system** enhances your JOST fifth wheel with the addition of our two-sensor monitoring system as well as a LED throat illumination.

The **dual-sensor system** is connected to the Go/No-Go indicator light located next to the handle. A proper coupling with the handle and kingpin in the locked position will be lit up as green or “Go light”. If the system does not detect the handle and/or kingpin in the proper locked position, the light will flash red or “No-Go light”

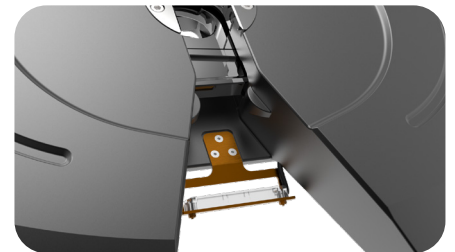
The **throat illumination light** automatically turns on when the system is engaged. The light shines directly into the throat of the wheel to provide a better view of the lockbar for pre-trip inspections.

Available on:

Air Release Topplates
Converter Dolly Topplates

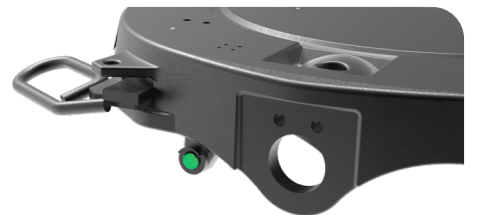
Ratings:

55,000 lbs vertical load
150,000 lbs pull load



Throat Illumination

LED Light shines into the throat for clear inspection of the coupled fifth wheel.



Go Light

Green light indicates the fifth wheel is properly coupled, with both kingpin and handle in the locked position.



No-Go Light

Flashing red light with audible alert indicates that the kingpin and/or handle are not properly coupled.