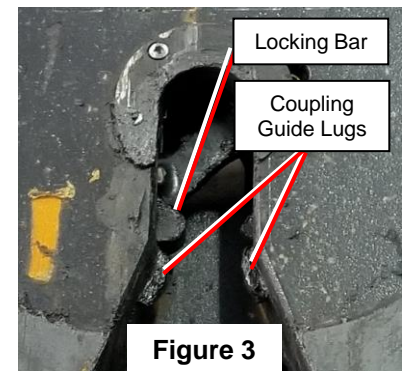
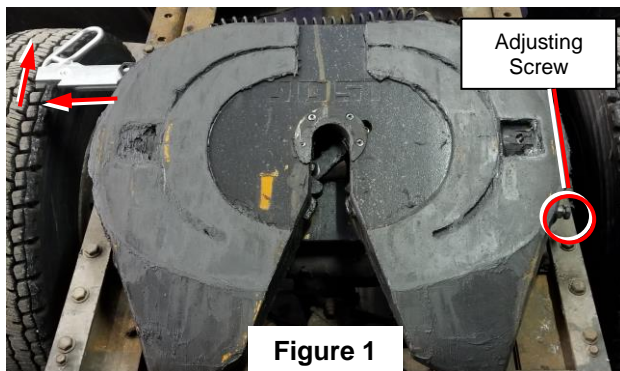


The JOST fifth wheel can be diagnosed quickly

For diagnosis and most repairs, the JOST fifth wheel remains on the brackets. The following visual inspections can be performed in less than 5 minutes. Precise measurements for normal wear are posted in "JOST Lock Replacement Procedures for JSK37 Series Fifth Wheels – Document #LT_JSK37-05".

Review the Topplate Surface

- 1. Pull the Release Handle out and hang it on the release notch.**
(See Figure 1)
- 2. The Release Handle must be flat and straight.**
- 3. The Adjusting Screw should show 3/8" to 1-1/2" of threads.**
(See Figure 1)
 - A. No visible threads indicate the topplate has been maladjusted.**
The Lever with Bushing may have been damaged.
 - B. More than 1-1/2" of threads showing indicate:**
Possible excess wear or damage to the Cushion Ring Insert or Lock Jaw.
Possible excess grease in the throat and Locking Bar areas.
Possible bent Lever with Bushing.
- 4. Scrape excess grease from the recessed center area of the topplate surface.**
- 5. The Cushion Ring Insert must not be chipped or damaged.**
(See Figure 2)
 - A. Replace the Cushion Ring Insert if worn into the "O and S" of the JOST Logo.**
 - B. Replace the Cushion Ring Insert if it has been chipped or damaged.**
- 6. The Locking Bar tip must protrude further into the throat than the coupling guide lugs.**
(See Figure 3)
 - A. If not, the Lever with Bushing may be bent.**



Review the Lever w/Bushing under the Topplate

(Note: The best view is from the passenger side frame rail)

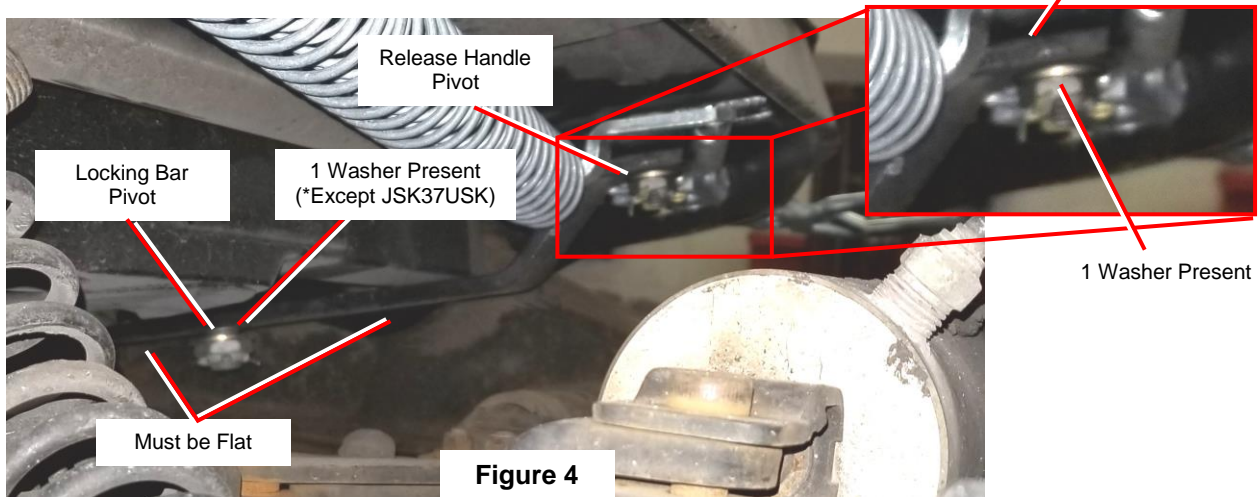
1. Review the Lever with Bushing.

(See Figure 4)

- A. The end bolted to the Release Handle must parallel the underside of the topplate.
Replace the Lever w/Bushing if pointed up or down.
- B. The surface bolted to the locking bar pivot must be flat.
Replace the Lever w/Bushing if bent or bowed.

2. Review the Pivot Bolts.

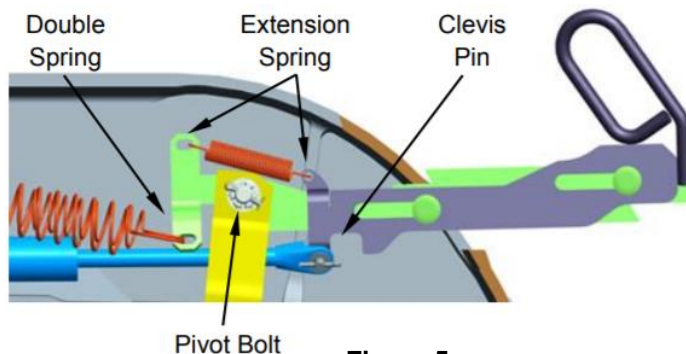
- A. There must be 1 washer* located between the lever and the castellated nut on each pivot bolt.
***Note:** JSK37USK Sensor Topplate requires 2 Washers at the Locking Bar Pivot Bolt
- B. The castellated nuts must be installed until the cotter pin can be just inserted.
Do not tighten or snug the castellated nuts.
- C. With the Double Coil Spring disconnected, the Pivot Bolts must rotate freely.
Lubricate the pivot bolts with aerosol penetrating oil as needed.
Loosen the castellated nuts as needed.



3. Review Release Handle Attachments

(See Figure 5)

- A. Both springs of the Double Coil Spring must be attached to the Release Handle eyelet aft of the pivot bolt away from the handle loop.
- B. Both springs of the Double Coil Spring must be attached to the topplate casting eyelet located above the passenger side frame rail.
- C. The air release extension rod end clevis must be pinned to the eyelet aft of the pivot bolt closest to the handle loop.
- D. The Extension Spring must be attached to both forward facing Release Handle eyelets.



Use a Lock Tester to Check Operation

1. Engage the lock test tool, attempting to lock the fifth wheel.
2. Note the Release Handle position.
 - A. The Release Handle must go all of the way in.
 - B. The Secondary Lock Notch must be behind the casting skirt (See Figure 6)
 - C. The Third Lock must be engaged (See Figures 7 and 8).
 - The Standard Release Handle must be down in the narrow lower slot (See Figure 7).
 - The Retractable Release Handle loop must be adjacent to the casting (See Figure 8).

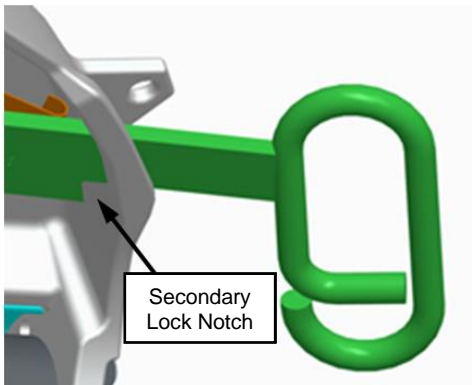


Figure 6

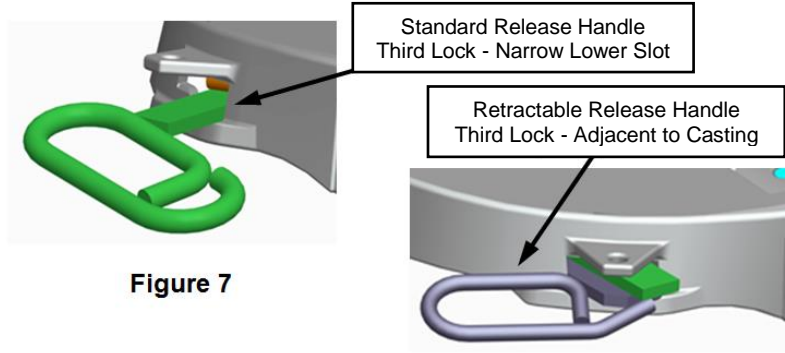


Figure 7

Figure 8

3. Note the Lock Jaw and Locking Bar position.
 - A. The Lock Jaw must accept the kingpin and fully rotate. Replace the squeezed Lock Jaw if the kingpin does not fit (See Figure 9).
 - B. The Locking Bar must fully cross the throat (See figure 10). Replace the spread Lock Jaw if the Locking Bar does not fully cross the throat (See Figure 11).



Figure 9

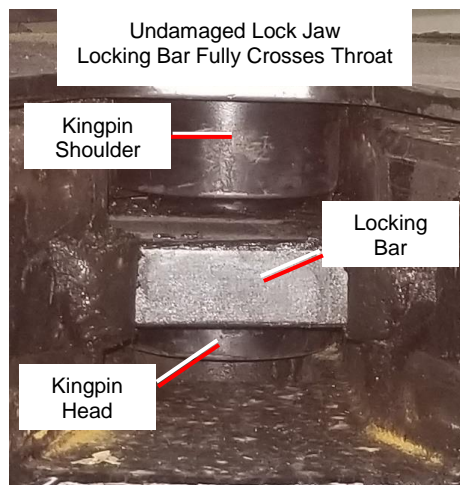


Figure 10

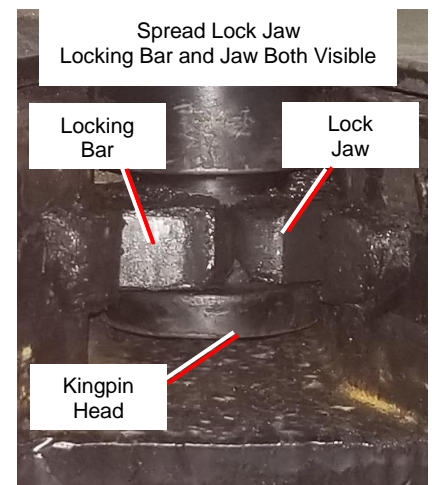
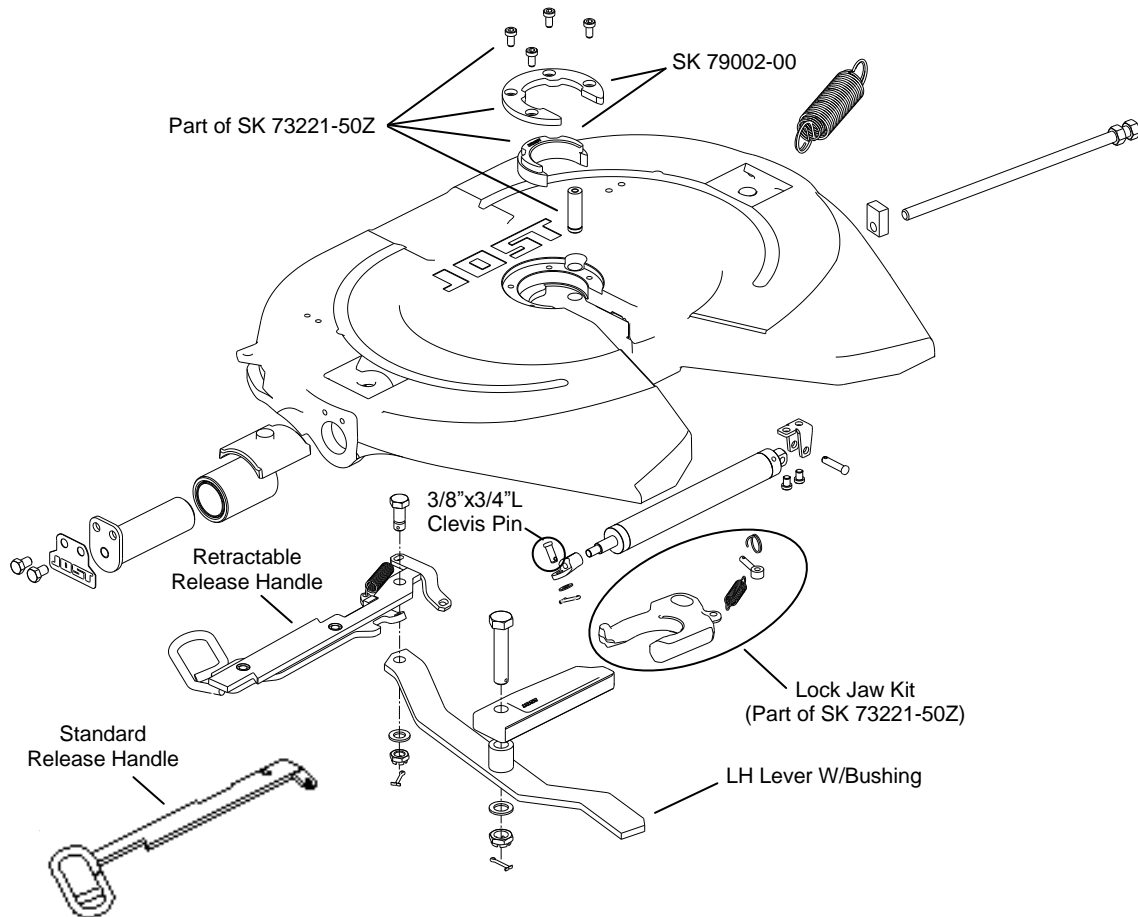


Figure 11

Commonly Stocked Dealer Repair Parts

JOST Part#	Part Description	Fit JOST Models
SK 73105-15	LH Release Handle	JSK37UWL
		JSK37USL
SK 75016-04	Retractable Release Handle	JSK37USA
		JSK37USB
SK 3105-140	LH Lever W/Bushing	JSK37U Series
SK 73221-50Z	Cushion Ring and Lock Jaw	JSK37U Series
SK 79002-00	Cushion Ring Assembly* (*Included in SK 73221-50Z)	JSK37U Series
SK 2905-125	Release Handle	JSK36NSL
SK 2905-127	Lever	JSK36NSL
SK 75013-10	Lock Jaw Kit* (*Included in SK 73221-50Z)	JSK36NSL



The right to alter specifications is reserved.

Page 4 of 4



1770 Hayes Street
Grand Haven, MI 49417
www.jostinternational.com

Ph. (616) 846-7700 (800) 253-5105
Fax (616) 846-0310

LT JSK37-98 RevA